

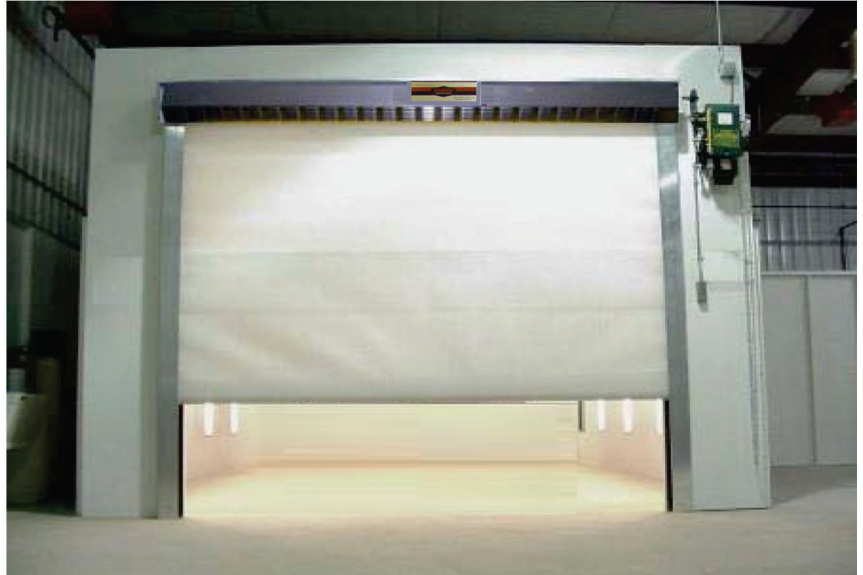
PIONEER SealTight 300ST Door

The SealTight 300ST Doors Are Perfect For Environmental Control Situations, Where Higher Speeds and Larger Applications Are Required.

300ST High Speed Door

The 300ST Provides Simple, Functional and Inexpensive Environmental Control. This is a Unique and Affordable Choice for Applications Where Light to Medium use and Low Cost are Requirements.

- ❖ Standard Sizes up to 13' Wide and 14' Tall
- ❖ Aluminum Tracks and Covers
- ❖ Patented Seal System, 3 Ply Fabric, Double Seal with Dead Air Space for Good Thermal Insulation
- ❖ Excellent Seal for Pressurization Applications
- ❖ Two Operators to Choose From
- ❖ Fabric and Window Options
- ❖ Additional Switches and Opening Devices
- ❖ Remote Transmitter & Receiver Option



Manual
Chain
Hoist

or



Manaras
Opera
(Continuous
duty operation)
8-10" per sec.

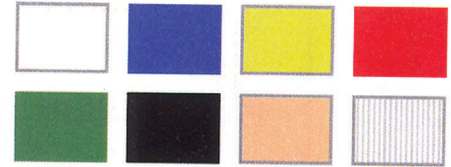


1-866-753-2655
www.pioneerindustrialdoor.com

Safety Features on SealTight 300ST Doors

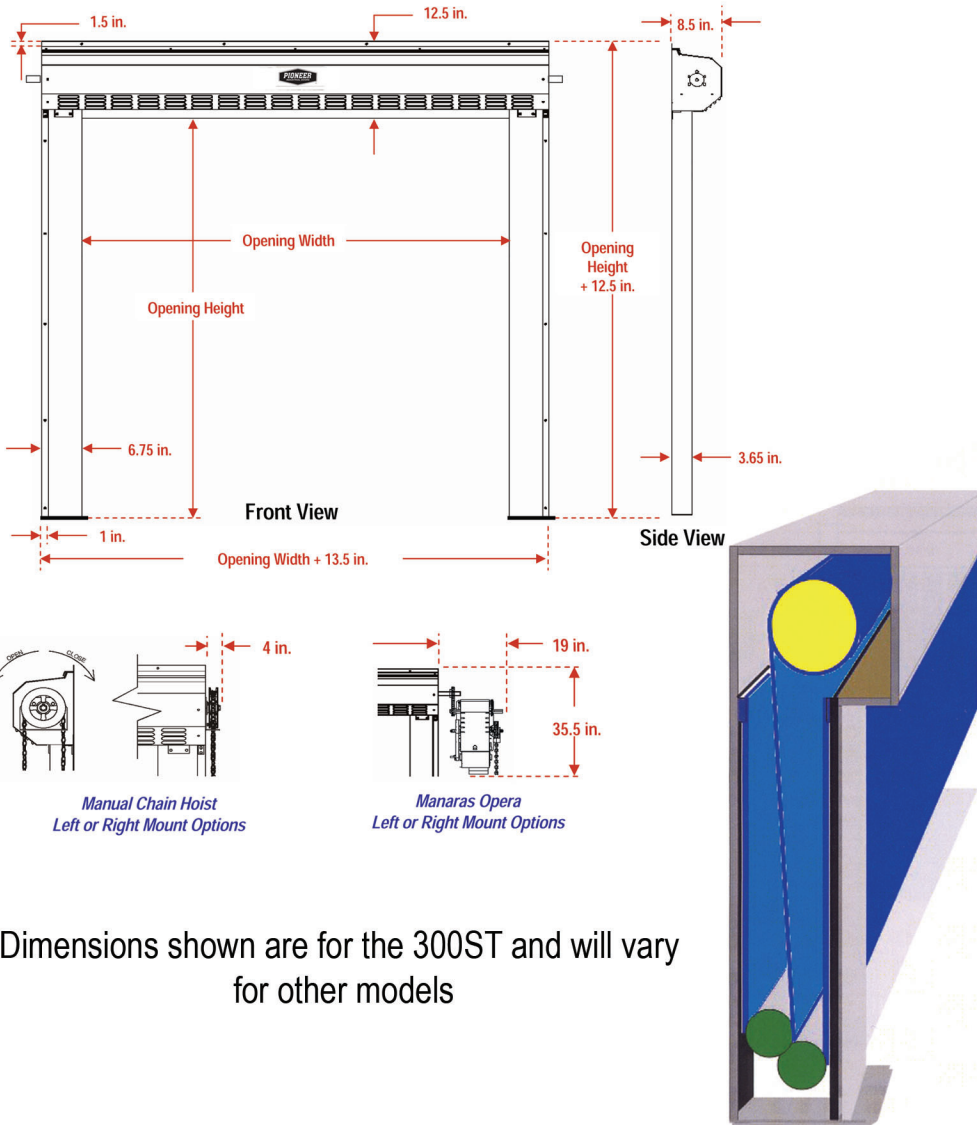
- ❖ In-Track Mounted Reversing Photo Eyes (Optional)
- ❖ Floating Bottom Bars
- ❖ Leading Edge Reversing Switch Sensor

Curtain Colors



Simple, functional design and construction

- Upper drive shaft roller**
 - lifts and lowers the curtain by the center fabric layer
- Two offset lower tension roller bars**
 - creates the side "seal" by pushing the hook into the loop as the curtain is lowered
- 3 ply (layers) woven polyolefin and polyethylene curtain fabric**
 - tough, flexible and tear resistant fabric is easy to patch if punctured minimizing downtime. Available in white(standard), blue, red, green, beige, black and white anti-static (with black carbon fiber threads)
- Industrial hook and loop ***
 - specially designed high strength and high cycle material
- Aluminum side channels, header frame and cover**
 - strong, lightweight and easy to clean



Dimensions shown are for the 300ST and will vary for other models

