

PIONEER SealTight 600 ST Door

The SealTight 600ST Doors Are Perfect For Environmental Control Situations, Where Higher Speeds Are Required.

600ST High Speed Door

Simple and Functional, the Model 600 is Combined with the SC-650 (Smart 50) Controller with Features and Options Setting it Apart from Other Fabric Doors.

- ❖ Standard Sizes up to 20'W x 22'H
- ❖ Opening Speeds up to 48" per Second
- ❖ 3 Layers of Flexible Tear Resistant Fabric with R-4 Insulation Value
- ❖ Lightweight, Easy to Clean, Corrosion Resistant Aluminum Frame
- ❖ Wind Load Capacity Up to 80 m.p.h.*
- ❖ 100% Sealing Top and Sides. Industrial Hook and Loop Seals Curtain to Both Sides of Track
- ❖ Auto-Closure with Programmable Time Delay
- ❖ Manual Override in Case of Power Failure
- ❖ Optional Window (Available Only in Certain Door Sizes)
- ❖ Simple Mechanical Installation
- ❖ Optional Door Frame Available



Several Actuation Options Available:
1, 2, or 3 Button Switches, Remote Control, Pull Cord, Floor Loop, Motion Sensors, or any Combination of These

The Smart 50 Door Controller is State of the Art, Based on the Latest Microprocessor Technology. This Allows a Level of Function, Reliability, and Safety Unachievable in Conventional Door Systems.

*Wind Load Varies by Door Size



1-866-753-2655
www.pioneerindustrialdoor.com

Safety Features on SealTight 600ST Doors

- ❖ In-Track Mounted Reversing Photo Eyes
- ❖ Leading Edge Reversing Switch Sensor

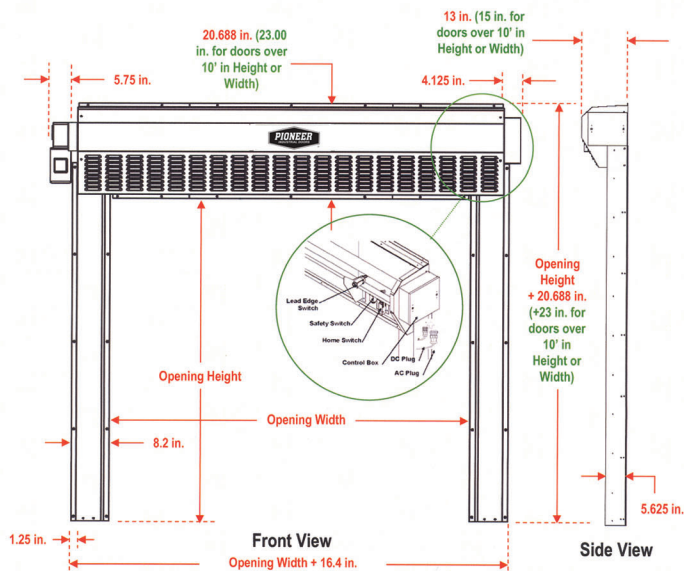
- ❖ Floating Bottom Bars
- ❖ Impact Resistant Tension Pipes *

*Available on Doors up to 12'Wide

Smart 50 Microprocessor Controller

Using the Latest Microprocessor technology, the Smart 50 Controller Allows for a Level of Function, Reliability and Safety Unachievable in Conventional Door Systems.

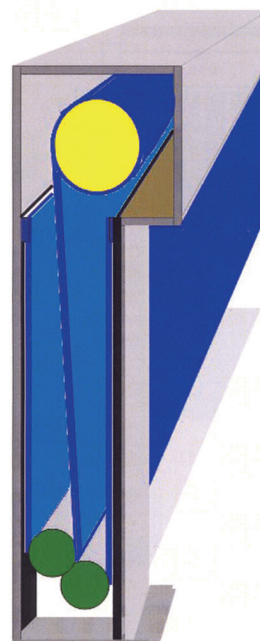
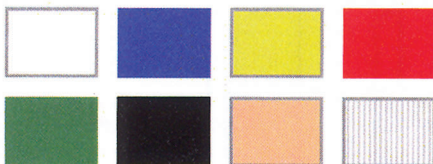
- Programmable Auto Closure From 5 Second to 4 Minutes
- Independent Open & Close Speeds
- Cycle Counter
- Continuously Monitors Door Position, Safety Switches, Remote, Motion Detectors, Etc.
- Internal Electrical Transformer



Dimensions shown are for the 600ST and will vary slightly for other models and larger openings

The Motor is a Right Angle Gear Motor, Featuring a Die Cast Aluminum Frame for Maximum Corrosion Resistance and Hypoid Helical Gearbox for Maximum Torque and Efficiency. Motor Design Incorporates a Manual Override in Case of Power Outage.

Curtain Colors



Simple, functional design and construction

- Upper drive shaft roller**
 - lifts and lowers the curtain by the center fabric layer
- Two offset lower tension roller bars**
 - creates the side "seal" by pushing the hook into the loop as the curtain is lowered
- 3 ply (layers) woven polyolefin and polyethylene curtain fabric**
 - tough, flexible and tear resistant fabric is easy to patch if punctured minimizing downtime. Available in white (standard), blue, red, green, beige, black and white anti-static (with black carbon fiber threads)
- Industrial hook and loop ***
 - specially designed high strength and high cycle material
- Aluminum side channels, header frame and cover**
 - strong, lightweight and easy to clean